



FASTEKS® Blindniete
FASTEKS® Blind rivets

FASTEKS® Blindniete

Blindniete verbinden zuverlässig zwei Teile, unabhängig von deren Werkstoff. Ob aus Stahl, Kunststoff oder anderen Materialien mit unterschiedlichen Festigkeiten und Materialstärken, Blindniete sorgen für sicheren Halt. Selbst größere Bauteile lassen sich verzugsfrei und ohne Oberflächenbeschädigung dauerhaft miteinander verbinden.

Mehr über FASTEKS®

www.kvt-fastening.de/produkte/marken/fasteks/

FASTEKS® Blind Rivets

Rivets connect reliable two parts independent to the materials. Whether steel, plastics or other materials with different strengthes and material thicknesses, the rivets take care of save hold. Even bigger components can be durable connected free from distortion and without surface damage.

More about FASTEKS®

www.kvt-fastening.de/en/products/brands/fasteks/



Inhalt Content

Standard-Blindniete, Flachrundkopf Standard break stem rivets, domed head Nichtrostender Stahl Stahl, verzinkt Aluminium, 3.5%/2.5% Magnesium Stainless steel steel galvanized aluminum, 3.5%/2.5% magnesium	4 – 6
Standard-Blindniete, Senkkopf Standard break stem rivets, countersunk Stahl, verzinkt Aluminium, 3.5% Magnesium Steel galvanized aluminum, 3.5% magnesium	7 – 8
Multigrip-Blindniete, Flachrundkopf Multigrip rivets, domed head Stahl, verzinkt Aluminium, 2.5% Magnesium Steel galvanized aluminum, 2.5% magnesium	9 – 10
Multigrip-Blindniete, Senkkopf Multigrip rivets, countersunk Aluminium, 2.5% Magnesium Aluminum, 2.5% magnesium	11
Becher-Blindniete, Flachrundkopf Closed end rivets, domed head Nichtrostender Stahl Stahl, verzinkt Aluminium, 5% Magnesium Stainless steel steel galvanized aluminum, 5% magnesium	12 – 14

Belastungsangaben, Verarbeitungsempfehlungen sowie nicht genau tolerierte Maßangaben zum Bauteil müssen vor Serienfertigung für den jeweiligen Anwendungsfall angefragt werden.

Alle Maße sind in mm angegeben.

Technical performances, installation recommendations as well as unspecified tolerances regarding the dimensions of the parts have to be requested individual for each application before starting the series production.

All dimensions are specified in mm.

Standard-Blindniete

Standard break stem rivets

Flachrundkopf | Domed head

Werkstoff

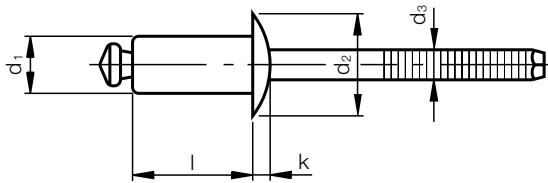
Hülse: Nichtrostender Stahl
Dorn: Nichtrostender Stahl

Material

Body: Stainless steel
Mandrel: Stainless steel

Weitere Ausführungen auf Anfrage

Additional types on request



d_1 -0.15 +0.08	l +1.0 -0.5			k ± 0.4	d_2 ± 1.0	d_3 nom.			Bestell- bezeichnung Order description
							N	N	
3.2	6.0	1.5-2.5	3.3	0.8	6.5	2.0	1800	2500	KSD 3206 SSA2
	8.0	2.5-4.5							KSD 3208 SSA2
	10.0	4.5-6.5							KSD 3210 SSA2
4.0	6.0	0.5-2.0	4.1	1.0	8.0	2.5	2900	3600	KSD 4006 SSA2
	8.0	2.0-4.0							KSD 4008 SSA2
	10.0	4.0-6.0							KSD 4010 SSA2
	13.0	7.0-9.0							KSD 4013 SSA2
4.8	8.0	1.5-3.0	4.9	1.1	9.5	2.9	4200	5300	KSD 4808 SSA2
	10.0	3.0-5.0							KSD 4810 SSA2

Standard-Blindniete

Standard break stem rivets

Flachrundkopf | Domed head

Werkstoff

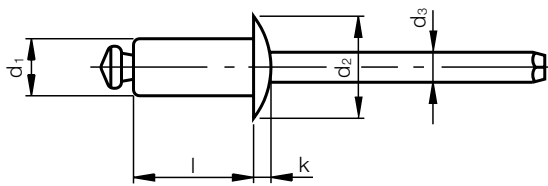
Hülse: Stahl, verzinkt
Dorn: Stahl, verzinkt

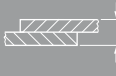



Material

Body: Steel galvanized
Mandrel: Steel galvanized

Weitere Ausführungen auf Anfrage

Additional types on request



d_1 -0.15 +0.08	l +1.0 -0.5			k ± 0.4	d_2 ± 1.0	d_3 nom.			Bestell- bezeichnung Order description
3.2	6.0	1.5-3.0	3.3	0.8	6.5	2.0	1060	1285	KSD 3206 STST
	8.0	3.0-5.0							KSD 3208 STST
	10.0	5.0-7.0							KSD 3210 STST
4.0	6.0	1.5-2.5	4.1	1.0	8.0	2.5	1550	1990	KSD 4006 STST
	8.0	2.5-4.5							KSD 4008 STST
	10.0	4.5-6.5							KSD 4010 STST
4.8	8.0	2.5-4.5	4.9	1.1	9.5	2.9	2300	2920	KSD 4808 STST
	10.0	4.5-6.0							KSD 4810 STST
	12.0	6.0-8.0							KSD 4812 STST
	14.0	8.0-10.0							KSD 4814 STST
	16.0	10.0-11.5							KSD 4816 STST
	18.0	11.5-13.5							KSD 4818 STST

Standard-Blindniete

Standard break stem rivets

Flachrundkopf | Domed head

Werkstoff

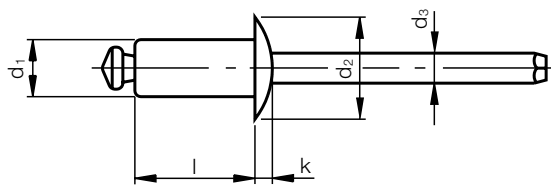
Hülse: Aluminium, 3.5%/2.5% Magnesium
Dorn: Stahl, verzinkt





Material

Body: Aluminum, 3.5%/2.5% magnesium
Mandrel: Steel galvanized

Weitere Ausführungen auf Anfrage

Additional types on request



d_1 -0.15 +0.08	l +1.0 -0.5			k ± 0.4	d_2 ± 1.0	d_3 nom.	 N	 N	Bestell- bezeichnung Order description
3.2	4.0	0.5-1.5	3.3	0.8	6.5	1.75	670	980	KSD 3204 ALST
	6.0	1.5-3.5							KSD 3206 ALST
	8.0	3.5-5.5							KSD 3208 ALST
	10.0	5.5-7.5							KSD 3210 ALST
	12.0	7.5-9.5							KSD 3212 ALST
	14.0	9.5-11.5							KSD 3214 ALST
4.0	6.0	1.5-3.0	4.1	1.0	8.0	2.10	1050	1560	KSD 4006 ALST
	8.0	3.0-5.0							KSD 4008 ALST
	10.0	5.0-6.5							KSD 4010 ALST
	12.0	6.5-8.5							KSD 4012 ALST
	14.0	8.5-10.5							KSD 4014 ALST
	16.0	10.5-12.5							KSD 4016 ALST
4.8	8.0	3.0-4.5	4.9	1.1	9.5	2.70	1690	2230	KSD 4808 ALST
	10.0	4.5-6.0							KSD 4810 ALST
	12.0	6.0-8.0							KSD 4812 ALST
	14.0	8.0-10.0							KSD 4814 ALST
	16.0	10.0-12.0							KSD 4816 ALST
	18.0	12.0-14.0							KSD 4818 ALST
20.0	14.0-16.0	KSD 4820 ALST							

Standard-Blindniete

Standard break stem rivets

Senkkopf | Countersunk

Werkstoff

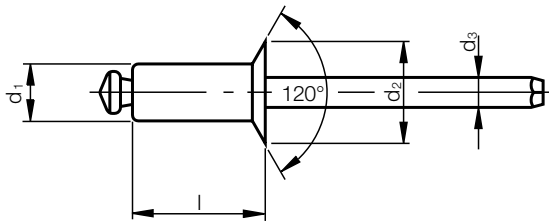
Hülse: Stahl, verzinkt
Dorn: Stahl, verzinkt

Material

Body: Steel galvanized
Mandrel: Steel galvanized

Weitere Ausführungen auf Anfrage

Additional types on request



d_1 -0.15 +0.08	l +1.0 -0.5			d_2 ± 0.5	d_3 nom.			Bestell- bezeichnung Order description
3.2	8.0	3.0-5.0	3.3	6.0	2.0	1060	1285	KSK 3208 STST
4.0	8.0	2.5-4.5	4.1	7.5	2.5	1550	1990	KSK 4008 STST
4.8	8.0	2.5-4.5	4.9	9.0	2.9	2300	2920	KSK 4808 STST
	10.0	4.5-6.0						KSK 4810 STST

Standard-Blindniete

Standard break stem rivets

Senkkopf | Countersunk

Werkstoff

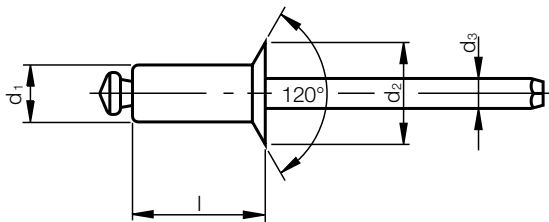
Hülse: Aluminium, 3.5% Magnesium
Dorn: Stahl, verzinkt

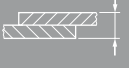



Material

Body: Aluminum, 3.5% magnesium
Mandrel: Steel galvanized

Weitere Ausführungen auf Anfrage

Additional types on request



d_1 -0.15 +0.08	l +1.0 -0.5			d_2 ± 0.5	d_3 nom.	 N	 N	Bestell- bezeichnung Order description
3.2	8.0	3.5-5.5	3.3	6.0	1.75	760	980	KSK 3208 ALST
	10.0	5.5-7.5						KSK 3210 ALST
4.0	10.0	5.0-6.5	4.1	7.5	2.10	1050	1560	KSK 4010 ALST

Multigrip-Blindniete

Multigrip rivets

Flachrundkopf | Domed head

Werkstoff

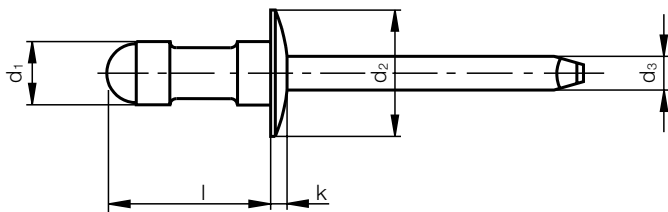
Hülse: Stahl, verzinkt
Dorn: Stahl, verzinkt

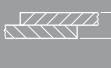



Material

Body: Steel galvanized
Mandrel: Steel galvanized

Weitere Ausführungen auf Anfrage

Additional types on request



d_1 -0.15 +0.08	l +1.0 -0.5			k max.	d_2 ± 0.4	d_3 nom.			Bestell- bezeichnung Order description
		N	N						
3.2	9.0	1.5-4.0	3.3	1.1	7.2	2.1	1500	1700	KMD 3209 STST

Werkstoff

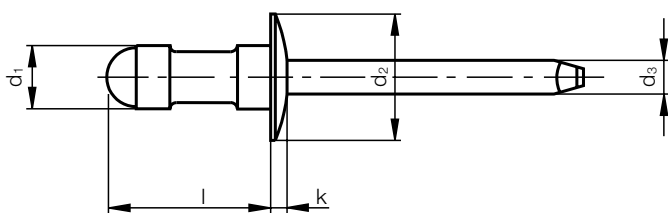
Hülse: Aluminium, 2.5% Magnesium
Dorn: Stahl, verzinkt

Material

Body: Aluminum, 2.5% magnesium
Mandrel: Steel galvanized

Weitere Ausführungen auf Anfrage

Additional types on request



d_1 -0.15 +0.08	l +1.0 -0.5			k max.	d_2 ± 0.4	d_3 nom.			Bestell- bezeichnung Order description
		N	N						
3.2	8.0	0.5-5.0	3.3-3.5	1.4	6.0	1.8	680	950	KMD 3208 ALST
	12.0	4.0-9.5							KMD 3212 ALST
4.0	10.0	1.5-6.5	4.1-4.3	1.7	8.0	2.2	950	1500	KMD 4010 ALST
	12.7	4.0-9.5							KMD 4013 ALST
	16.0	7.5-12.5							KMD 4016 ALST
4.8	12.0	2.0-7.0	4.9-5.2	2.0	9.5	2.8	1300	2000	KMD 4812 ALST
	16.0	6.0-11.0							KMD 4816 ALST

Multigrip-Blindniete

Multigrip rivets

Flachrundkopf | Domed head

Werkstoff

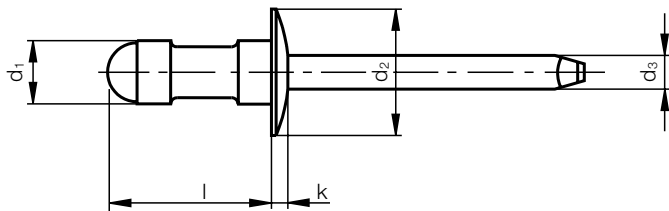
Hülse: Aluminium, 2.5% Magnesium
Dorn: Nichtrostender Stahl

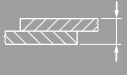


Material

Body: Aluminum, 2.5% magnesium
Mandrel: Stainless steel

Weitere Ausführungen auf Anfrage

Additional types on request



d_1 -0.15 +0.08	l +1.5 -0.5			k max.	d_2 ± 0.4	d_3 nom.	 N	 N	Bestell- bezeichnung Order description
3.2	8.0	0.8-4.8	3.3-3.5	1.4	6.0	1.8	650	950	KMD 3208 ALSS
	11.0	4.0-7.9							KMD 3211 ALSS
4.0	9.0	1.2-6.0	4.1-4.3	1.7	8.0	2.2	950	1500	KMD 4009 ALSS
	12.0	4.0-9.5							KMD 4012 ALSS
4.8	10.3	1.6-5.5	4.9-5.2	2.0	9.5	2.7	1300	2000	KMD 4810 ALSS
	15.0	5.0-10.5							KMD 4815 ALSS

Multigrip-Blindniete

Multigrip rivets

Senkkopf | Countersunk

Werkstoff

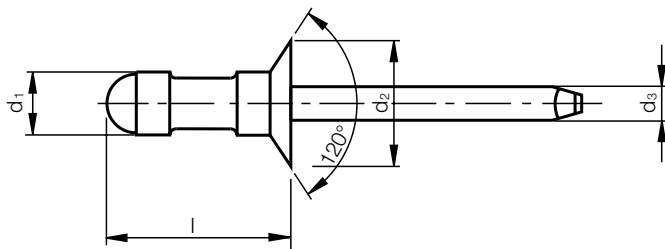
Hülse: Aluminium, 2.5% Magnesium
Dorn: Stahl, verzinkt

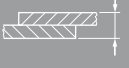



Material

Body: Aluminum, 2.5% magnesium
Mandrel: Steel galvanized

Weitere Ausführungen auf Anfrage

Additional types on request



d_1 -0.15 +0.08	l +1.0 -0.5			d_2 ± 0.5	d_3 nom.	 N	 N	Bestell- bezeichnung Order description
4.8	12.0	2.0-7.0	4.9-5.2	9.5	2.78	1320	2000	KMK 4812 ALST
	16.0	6.0-11.0						KMK 4816 ALST

Becher-Blindniete

Closed end rivets

Flachrundkopf | Domed head

Werkstoff

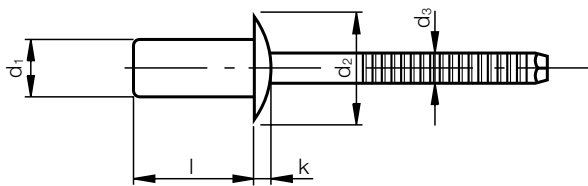
Hülse: Nichtrostender Stahl
Dorn: Nichtrostender Stahl

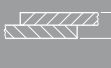



Material

Body: Stainless steel
Mandrel: Stainless steel

Weitere Ausführungen auf Anfrage

Additional types on request



d_1 -0.15 +0.08	l +1.0 -0.5			k max.	d_2 ± 1.0	d_3 nom.	 N	 N	Bestell- bezeichnung Order description
3.2	8.0	1.5-3.0	3.3	1.4	6.0	1.9	2000	2200	KCD 3208 SSA2
	9.5	3.0-5.0							KCD 3209 SSA2
	12.0	5.0-7.0							KCD 3212 SSA2
4.0	8.0	1.5-3.0	4.1	1.7	8.0	2.3	3000	3600	KCD 4008 SSA2
	9.5	3.0-5.0							KCD 4009 SSA2
	12.0	5.0-6.5							KCD 4012 SSA2
	16.0	6.5-10.5							KCD 4016 SSA2
4.8	9.5	3.0-5.0	4.9	2.0	9.5	2.9	4000	4400	KCD 4809 SSA2
	12.0	5.0-6.5							KCD 4812 SSA2

Becher-Blindniete

Closed end rivets

Flachrundkopf | Domed head

Werkstoff

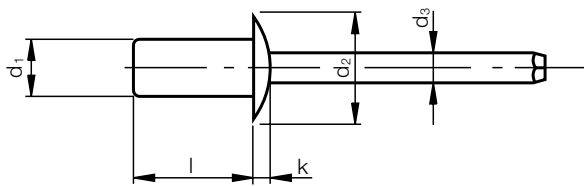
Hülse: Stahl, verzinkt
Dorn: Stahl, verzinkt

Material

Body: Steel galvanized
Mandrel: Steel galvanized

Weitere Ausführungen auf Anfrage

Additional types on request



d_1 -0.15 +0.08	l +1.0 -0.5			k max.	d_2 ± 1.0	d_3 nom.			Bestell- bezeichnung Order description
							N	N	
3.2	9.5	3.0-5.0	3.3	1.3	6.0	1.9	1260	1300	KCD 3209 STST
4.0	10.0	3.0-5.0	4.1	1.7	8.0	2.3	1700	1900	KCD 4010 STST
4.8	12.0	5.0-6.5	4.9	2.0	9.5	2.9	2400	2800	KCD 4812 STST

Becher-Blindniete

Closed end rivets

Flachrundkopf | Domed head

Werkstoff

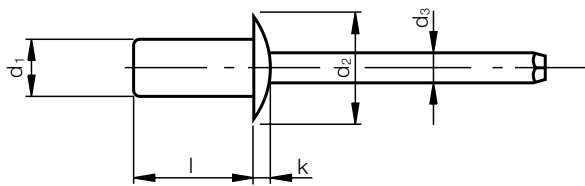
Hülse: Aluminium, 5% Magnesium
Dorn: Stahl, verzinkt

Material

Body: Aluminum, 5% magnesium
Mandrel: Steel galvanized

Weitere Ausführungen auf Anfrage

Additional types on request



d_1 -0.15 +0.08	l +1.0 -0.5			k max.	d_2 ± 1.0	d_3 nom.			Bestellbezeichnung Order description
3.2	6.5	0.5 - 2.0	3.3	1.4	6.0	1.70	1070	1250	KCD 3206 ALST
	8.0	2.0 - 3.5							KCD 3208 ALST
	9.5	3.5 - 5.0							KCD 3209 ALST
	10.7	5.0 - 6.5							KCD 3210 ALST
4.0	8.0	0.5 - 3.5	4.1	1.7	8.0	1600	2200	KCD 4008 ALST	
	9.5	3.5 - 4.5						KCD 4009 ALST	
	11.0	4.5 - 6.5						KCD 4011 ALST	
	12.7	6.5 - 8.0						KCD 4012 ALST	
4.8	8.0	1.0 - 3.0	4.9	2.0	9.5	2200	3100	KCD 4808 ALST	
	9.5	3.0 - 4.5						KCD 4809 ALST	
	11.0	4.5 - 6.0						KCD 4811 ALST	
	12.5	6.0 - 7.5						KCD 4812 ALST	
	14.0	7.5 - 9.0						KCD 4814 ALST	

KVT-Fastening Verbindungslösungen

KVT-Fastening – Fastening technology



Blindnietmuttern
Blind rivet nuts



Blindniettechnik
Blind rivet technology



Gewindeeinsätze
Thread-inserts



Einpressbefestiger
Self-clinching
fasteners



Bolzenschweißen¹⁾
Stud welding systems¹⁾



Sicherungsmuttern
Lock nuts



Befestigungselemente
für Verbundwerkstoffe
Bonding fasteners



Verschlusselemente
Access solutions



Schnellbefestiger und
Clipse
Quick fastening
elements and clips



Arretierungen
Quick release pins
and spring plungers



Klebertechnik¹⁾
Adhesives and
sealants¹⁾



Befestigungstechnik
Bau²⁾
Construction
fasteners²⁾



Spezialelemente²⁾
Special processes²⁾



Dichtstopfen
Plugs



Druckverstärker³⁾
Pressure intensifiers³⁾



Verarbeitungstechnik
Installation technology



Schnelladapter und
-kupplungen⁴⁾
Quick connectors⁴⁾



Logistiksysteme
Logistic systems



Solutioneering
Solutioneering

Für komplexe Einsatzbereiche die optimale Verbindung und Dichtung

Im umfassenden KVT Sortiment finden Sie für jede Herausforderung die beste Lösung.

Jetzt informieren und in unserem E-Shop bestellen unter
www.kvt-fastening.com

Fastening, Sealing and Flow Control Solutions for complex Applications

The extensive KVT portfolio offers optimal solutions for your most challenging applications.

For more information about our range of products and order at our E-shop, please visit
www.kvt-fastening.com

¹⁾ In Deutschland nicht verfügbar. ²⁾ Nur in der Schweiz verfügbar. ³⁾ In der Schweiz nicht verfügbar. ⁴⁾ In Österreich nicht verfügbar.
¹⁾ Not available in Germany. ²⁾ Only available in Switzerland. ³⁾ Not available in Switzerland. ⁴⁾ Not available in Austria.

KVT-Fastening AG

Dietikon/Zürich | Switzerland
Tel: +41 44 743 33 33
info-CH@kvt-fastening.com
www.kvt-fastening.ch

KVT-Fastening GmbH

Illerrieden | Germany
Tel: +49 7306 782-0
info-DE@kvt-fastening.com
www.kvt-fastening.de

KVT-Fastening GmbH

Linz/Pichling | Österreich
Tel: +43 732 25 77 00
info-AT@kvt-fastening.com
www.kvt-fastening.at

KVT-Fastening Sp. z o.o.

Radom | Poland
Tel: +48 58 762 17 80
info-PL@kvt-fastening.com
www.kvt-fastening.pl

KVT-Fastening S.R.L.

București | Romania
Tel: +40 37 1381155
info-RO@kvt-fastening.com
www.kvt-fastening.ro

KVT-Fastening spol. s.r.o.

Bratislava | Slovakia
Tel: +421 9 11102510
info-SK@kvt-fastening.com
www.kvt-fastening.sk

KVT-Tehnika pritrjevanja d.o.o.

Ljubljana | Slovenia
Tel: +386 1 2808019
info-SI@kvt-fastening.com
www.kvt-fastening.si

KVT-Fastening s.r.o.

Brno | Czech Republic
Tel: +420 547 125200201
info-CZ@kvt-fastening.com
www.kvt-fastening.cz

KVT-Fastening Kft.

Budapest | Hungary
Tel: +36 1 769 0925
info-HU@kvt-fastening.com
www.kvt-fastening.hu



www.kvt-fastening.com

